

National Commission for Human Development Dashboards

Introduction

Evidence-based policymaking has been a consistently lacking component in Pakistan's legislative process. A data-driven decision and monitoring process would help scarce resources to be allocated and used efficiently. To fill this gap, Research and Development Solutions (RADS) partnered with the National Commission for Human Development (NCHD) to transform the existing static data into dynamic and interactive dashboards to promote informed decision-making across four key programs within the NCHD domain: Human Resources (HR), Education, Literacy, and Volunteers.

Process




The dashboards were created via an iterative process and strong feedback mechanisms. Initial meetings identified NCHD's requirements, available data, and desired outcomes, followed by ongoing communication to gather insights and incorporate feedback into the evolving dashboards.

The data provided was cleaned by the RADS team using Stata 17, ensuring its accuracy, consistency, and useability.

Microsoft Power BI was chosen for its user-friendly interface to create the dashboards that were integrated into the NCHD website. Key personnel were provided with training and technical guidance to ensure a smooth handover, and updates will be conducted periodically.

Functionalities

The dashboard enables detailed analysis of indicators such as human resources, education, literacy, and volunteer engagement by project, province, and sex. Key features include:

-  **Interactive data visualization:** Users can drill down into specific details, filter data, and gain deeper insights by interacting directly with the visualizations.
-  **User-friendly interface:** Intuitive navigation ensures that even non-technical users can access and interpret data effortlessly. Clear labels, logical organization, and straightforward controls contribute to a positive user experience.
-  **Customized Views:** Customization includes the option to select specific metrics, adjust time frames, and arrange widgets according

Salient Features

- **Leveraging Microsoft Power BI:** Integrated technical functionalities to create dynamic dashboards for NCHD programs, enabling advanced data analytics and real-time insights.
- **Real-Time Data Benefits:** Provided mechanism to aid performance tracking, gap analysis, efficient resource allocation, and robust monitoring.
- **Ensuring Efficacy:** Further investment in data visualization tools, capacity building, and periodic reviews to support evidence-based program and policy decision is required.

Figure I: Human Resource Dashboard

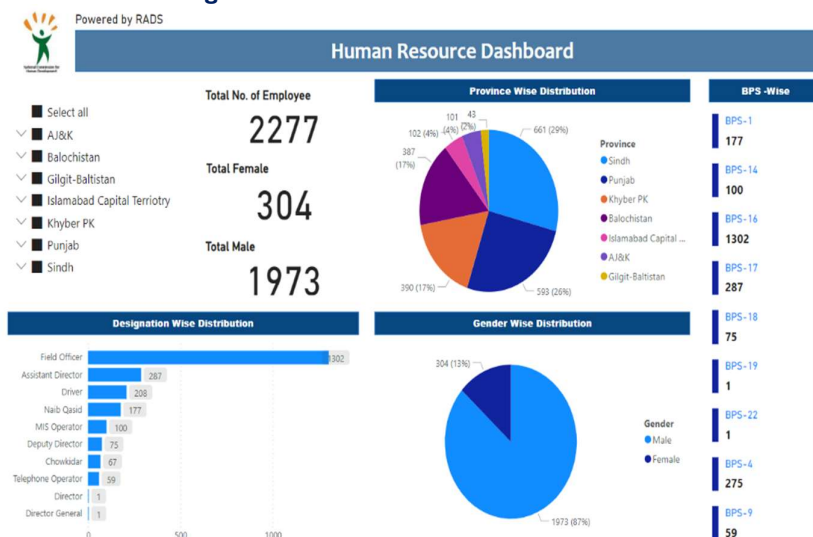


Figure II: Volunteers Program Registration 2023



to individual preferences. This allows the dashboard to provide both high-level summaries and granular details, depending on the requirement of the user.

Real-time updates: The dashboard continuously fetches and displays the most up-to-date data. Using real-time data, the dashboard automatically updates to reflect these changes. Real-time updates empower decision-makers to respond promptly to emerging trends or critical situations.

Way Forward

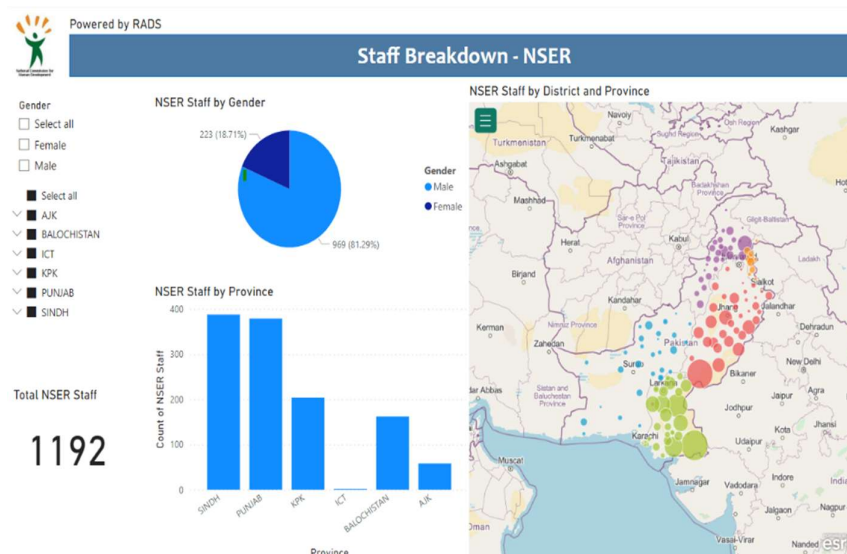
These dashboards have provided NCHD with a framework to track progress and performance, make data-driven adjustments, address challenges, and ensure efficient resource allocation. Continued investment in data visualization tools, capacity-building initiatives, and cyclic reviews are recommended to ensure the effectiveness and sustainability of the venture.

Subsequently, this policy brief recommends replicating this approach across government departments to harness the full potential of data for evidence-based decision-making. This data can be used in turn to ensure efficient resource allocation and provide a robust framework for monitoring and evaluating program performance.

Figure III: Literacy Program Dashboard



Figure IV: Staff Breakdown - NSER



This report was made possible with support from Bill & Melinda Gates Foundation (BMGF). The contents are the responsibility of Research and Development Solutions, Private Limited and do not necessarily reflect the opinion of BMGF.